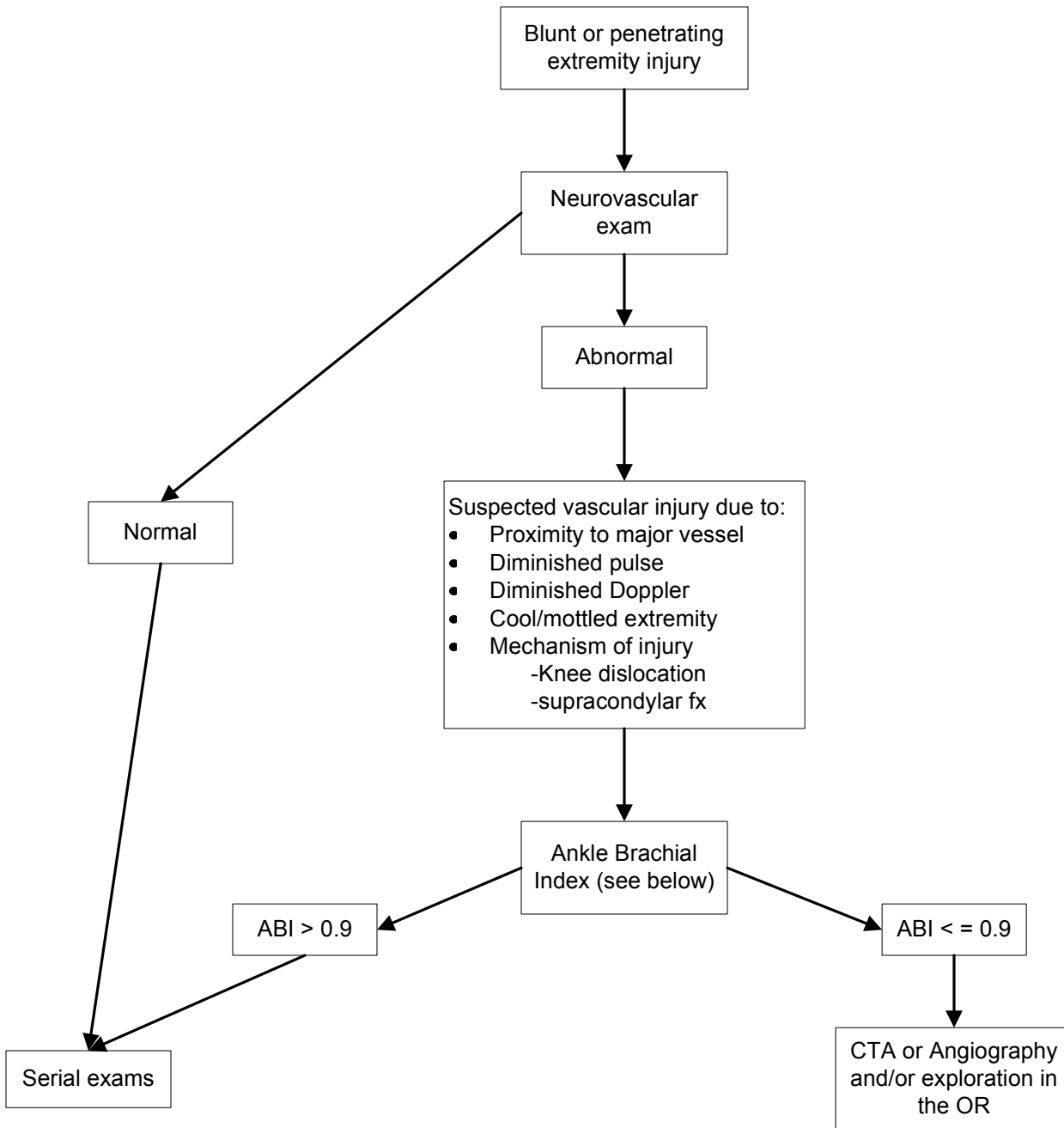


Guidelines for Peripheral Vascular Injury



ABI Procedure:

- On the lower extremity, a manual BP cuff is placed on the calf. A hand-held Doppler is used to find either the PT or DP pulse. WHILE LISTENING to the Doppler, the cuff is slowly inflated. The “closing” or occlusion pressure (where the Doppler pulse signal disappears) is recorded
- The other extremity is similarly measured
- The identical technique is used to measure the closing pressure in the arm
- A comparison of ankle to brachial closing pressures is recorded and calculated